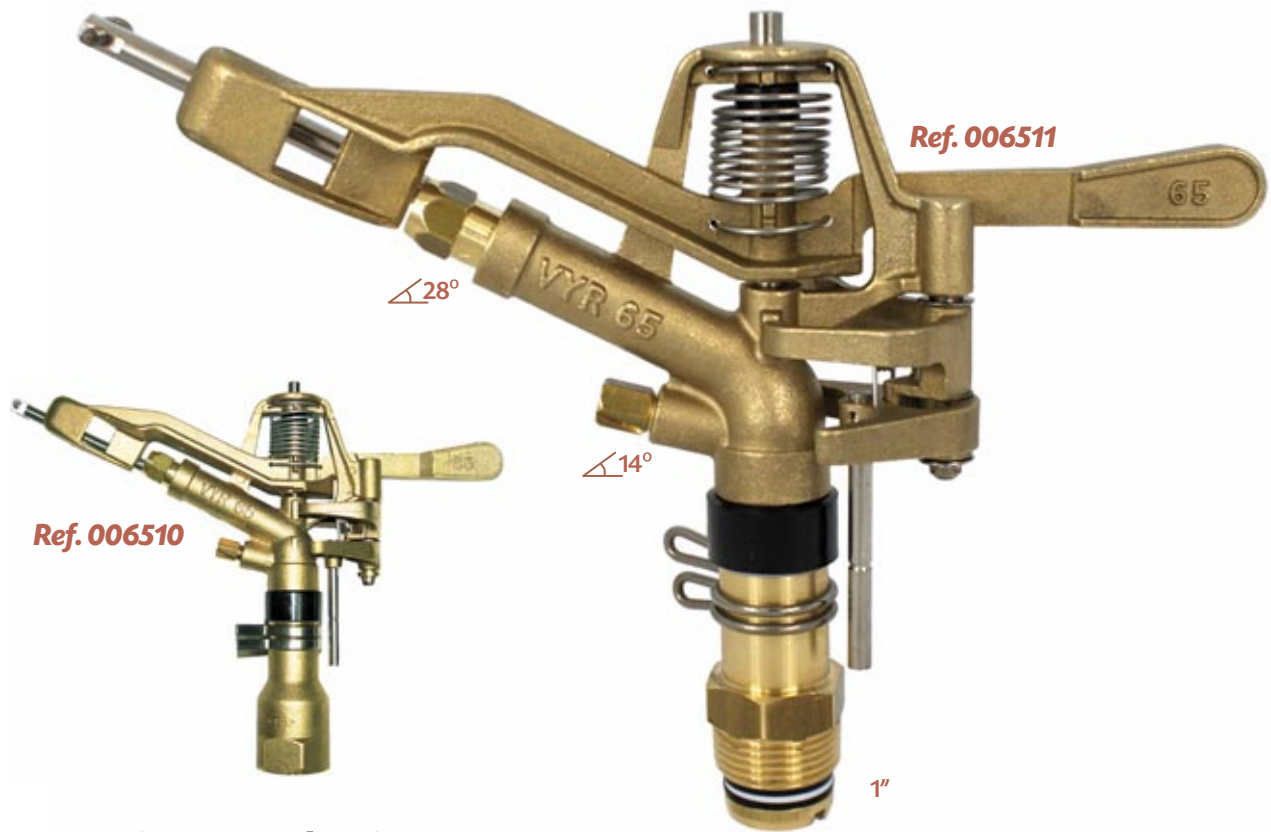


VYR-65



VYR-65 AG · Part circle AG

GENERAL PROPERTIES:

- Part circle agricultural impact sprinkler; medium-high flow.
- 1" male or female connection.
- Made of brass and stainless steel.
- High-resistance rotating joints.
- Nozzle angles of 28° and 14°
- Part circle mechanical system using clips that are very easy and quick to adjust.
- Used in full coverage irrigation with medium-high flow to cover the side and corner areas.
- Special mechanical and hydraulic design for energy saving and an optimal coverage coefficient.

TECHNICAL SPECIFICATIONS:

- Reach: 16 - 24 m / 52 - 79 ft.
- Flow: 2240 - 7840 L/H / 591 - 2.070 GPH
- Working pressure: 3.5 - 6 BAR / 50 - 87 PSI.
- Area: Part or full circle.
- Nozzles: One main long reach nozzle and a secondary short reach nozzle.
- Trajectory angles: 28° and 14°
- Maximum stream height: 6 m / 19,7 ft.
- Rotation time: Depending on the pressure and the nozzles, the rotation will be constant and continuous.
- Uniformity coefficient higher than 90% in areas of 24x24R, 25x25T and 25x26T (metres).

APPLICATIONS:

- Horticultural plantations, cereals, tubers, leguminous plants and fruit trees.

MEASUREMENTS:

- Height: 24 cm / 9,4 in.
- Width: 25 cm / 9,8 in.
- Weight: 1.420 kg / 3,12 Lbs.
- Units per box: 15

OPTIONS:

- Threads in BSP or NPT under demand.
- Rod with jet breaker diffuser pin for the main nozzle.
- Foldable tripod for mobile installation.
- This is one of the models which can be used in conjunction with our travelling sprinkler cart VYR-5300.

MODELS:

Ref. 006500: Without diffuser pin. 1" female.

Ref. 006501: Without diffuser pin. 1" male.

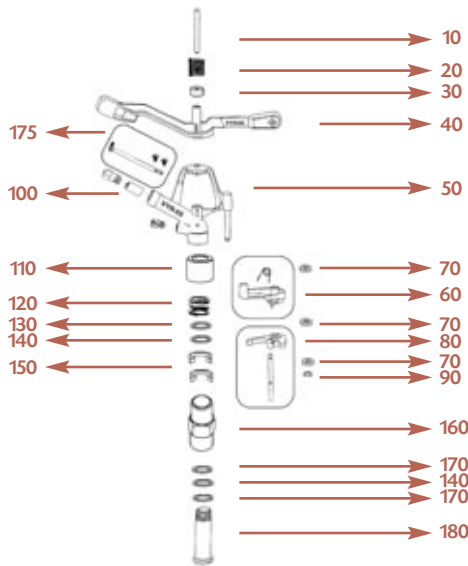
Ref. 006510: With diffuser pin. 1" female.

Ref. 006511: With diffuser pin. 1" male.

Ref. 106500: Diffuser pin set.



TABLES & PARTS



Performance nozzle tables VYR-65

Long range nozzles (long vane) + plug

NOZZLE	5,6 mm 7/32"		6,4 mm 1/4"		7,2 mm 9/32"		8,0 mm 5/16"		8,8 mm 11/32"		9,6 mm 3/8"	
BAR PSI	L/H GPH	Ø m Ø ft	L/H GPH	Ø m Ø ft	L/H GPH	Ø m Ø ft	L/H GPH	Ø m Ø ft	L/H GPH	Ø m Ø ft	L/H GPH	Ø m Ø ft
3,5	2370	42	3070	43	3730	44	4490	46	5335	46	6170	46
51	626	138	810	141	985	144	1185	151	1408	151	1629	151
4	2550	44	3300	44	4030	46	4850	48	5730	49	6650	49
58	673	144	871	144	1064	151	1280	157	1513	161	1756	161
4,5	2700	46	3515	46	4250	48	5150	50	6150	51	7020	52
65	713	151	928	151	1122	157	1360	164	1624	167	1853	171
5	2880	47	3690	48	4550	49	5450	52	6510	54	7470	55
73	760	154	974	157	1201	161	1439	171	1719	177	1972	180
5,5	3000	48	3900	50	4765	50	5700	54	6810	55	7835	57
80	792	157	1030	164	1258	164	1505	177	1798	180	2068	187



Easy part-circle adjustment

Long range nozzles (long vane) + short range nozzle

NOZZLE	4,8 x 3,2 mm 3/16 x 1/8"		5,6 x 3,2 mm 7/32 x 1/8"		6,4 x 3,2 mm 1/4 x 1/8"		7,2 x 3,2 mm 9/32 x 1/8"		8,0 x 3,2 mm 5/18 x 1/8"		8,8 x 3,2 mm 11/32 x 1/8"	
BAR PSI	L/H GPH	Ø m Ø ft	L/H GPH	Ø m Ø ft	L/H GPH	Ø m Ø ft	L/H GPH	Ø m Ø ft	L/H GPH	Ø m Ø ft	L/H GPH	Ø m Ø ft
3,5	2500	40	3050	42	3720	43	4430	44	6010	46	6755	46
51	660	131	805	138	982	141	1170	144	1587	151	1783	151
4	2735	41	3265	44	4045	44	4740	46	6400	48	7290	49
58	722	135	862	144	1068	144	1251	151	1690	157	1925	161
4,5	2870	42	3470	46	4260	46	5045	48	6840	50	7800	51
65	758	138	916	151	1125	151	1332	157	1806	164	2059	167
5	3030	43	3660	47	4500	48	5380	49	7260	52	8250	54
73	800	141	966	154	1188	157	1420	161	1917	171	2178	177
5,5	3175	44	3845	48	4740	50	5575	50	7650	54	8640	55
80	838	144	1015	157	1251	164	1472	164	2020	177	2281	180



Standard Ø: Diameter range

- For optimum distribution avoid use in shady areas.
- Sprinklers will be supplied with standard nozzles unless otherwise specified.
- In order to calculate the flow, add the flows of the two nozzles. The range of the rear nozzle must be less than that of the main nozzle.
- These results has been obtained at indoor laboratory with 0 m/seg win velocity. Outdoor results may change range distances.